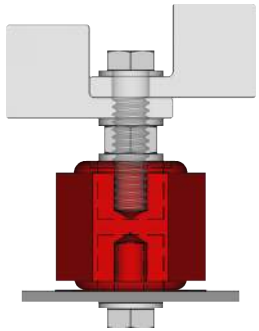
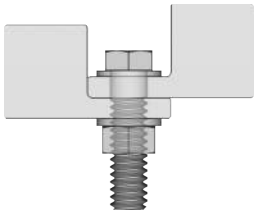


Assembly of Stacked Connectors and Standoffs



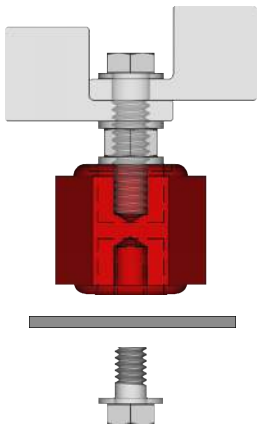
Use of Standoffs on Stacked Tangs



1) Proper bolting torque on lugs



2) Twist on the standoff. "Hand" torque



3) Bolt up the standoff bottom mounting bolt

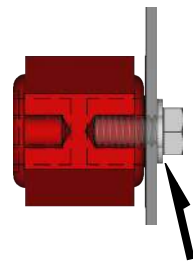
Bus or Ground Sheet Metal



On painted metal always remove paint under lug contact zone.

Standoff Mounting Options

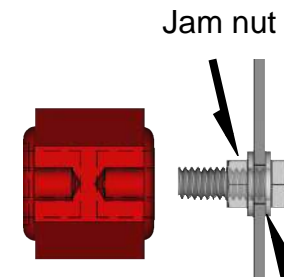
A



Pre tap cabinet wall

B

For panels that are not accessible from the back after installation of panel



Jam nut

Clearance hole or tapped